

Powerscreen® 1180 Premiertrak Jaw Crusher

SPECIFICATION - Rev 6. 01/01/2015



Powerscreen® 1180 Premiertrak

SPECIFICATION - Rev 6. 01/01/2015



Specification		1180 Premiertrak
Total weight		59,680kg (131,571lbs) including dirt conveyor
Transport	Length	16.6m (54' 6")
	Width	2.97m (9' 9")
	Height	3.8m (12' 6")
Working	Length	16.6m (54' 6")
	Width	2.97m (9' 9") no dirt conveyor 4.2m (13' 8") with 600mm (24") dirt conveyor
	Height	4.45m (14' 7")
Crusher type:		Single toggle jaw, feed opening 1100mm x 800mm (43"x32")
Powerunit:		Caterpillar C13 Tier 3 ACERT 287 kW (385hp)
Paint colour:		Blue RAL 5021, Grey RAL 7024, Black RAL 9005

Features & Benefits

The Powerscreen® 1180 Premiertrak is a medium to large scale mobile primary jaw crusher plant which achieves high outputs in a variety of quarrying, recycling & contract crushing applications.

The crusher features a high swing jaw with a forceful motion that improves feed entry into the crushing chamber to maximise throughput & allow for excellent reduction. User benefits include low fuel consumption, track mobility, simplified set-up operation & maintenance.

- Output potential up to 450 tph (496 US tph)
- Hydraulically folding wear resistant hopper
- Rugged vibrating grizzly feeder
- 2 Way dirt chute
- Heavy duty chassis & track frame
- High output & excellent reduction capacity
- Aggressive stroke with high swing jaw
- Oversize cartridge encased mainframe bearings
- Fully skirted product conveyor
- Manual crusher setting adjustment
- Economical to operate with a highly fuel efficient direct drive system
- Easy access powerunit canopy
- PLC control system with auto start facility
- Remote control via umbilical
- Dust suppression system
- Easily set up
- Optional 600mm (24") wide dirt conveyor
- Optional 800mm (32") wide dirt conveyor (remove for transport) 1 way chute for high fines content

Applications

Aggregate

- Sand & gravel
- Blasted rock
- River rock

Recycling

- C&D waste
- Overburden
- Foundry waste

Mining

- Processed ores
- Processed minerals

All specifications subject to change without prior notice

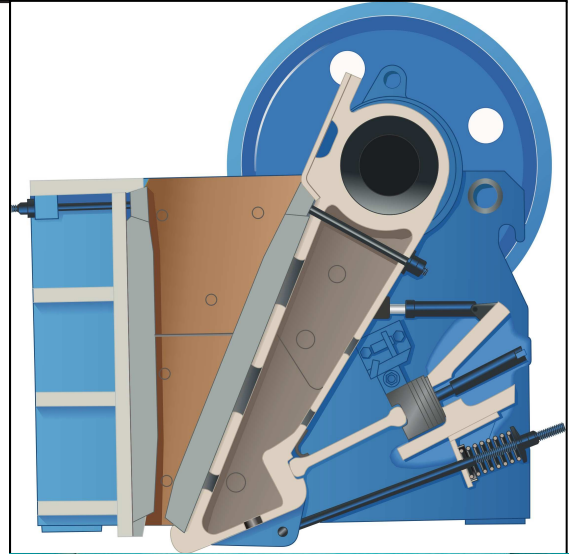


Powerscreen® 1180 Premiertrak

SPECIFICATION - Rev 6. 01/01/2015

Jaw Crusher

Crusher type:	Single toggle jaw with manual setting adjustment
Feed opening:	1100mm x 800mm (43" x 32")
Bearings:	Self aligning spherical roller
Lubrication:	Grease
Drive:	V belts with screw tension adjustment on engine
Pre-set:	100mm (4") closed side setting (CSS)
Minimum setting:	90mm (3.5") CSS in quarry 75mm (3") CSS in recycling Not exceeding a 10% natural fines value of 500kN All settings measured from root to tip & subject to suitability of feed material If in doubt please contact your dealer or Powerscreen
Maximum setting:	150mm (6") CSS (subject to feed grading)
Adjustment:	Manual adjustment system with hand operated hydraulic pump



Chamber Features

- Quick & easy manual adjustment system with hand operated hydraulic pump
- Large feed entry
- High output & excellent reduction capacity
- Highly productive stroke with high swing jaw
- Oversize cartridge encased mainframe bearings
- Welded mainframe construction



All specifications subject to change without prior notice



Powerscreen® 1180 Premiertrak

SPECIFICATION - Rev 6. 01/01/2015

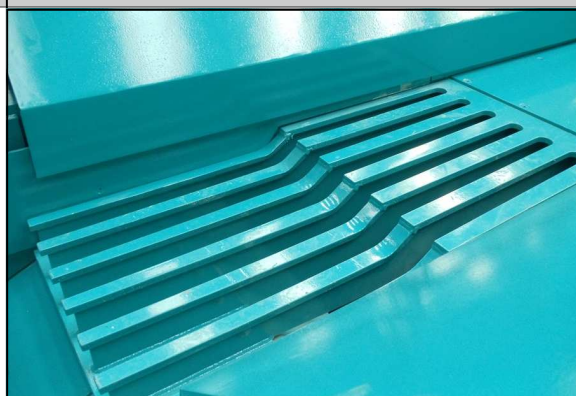
Hopper

Hopper type:	Hydraulic folding hopper, over centre struts & wedge lock
Hopper length:	4.57m (15')
Hopper width:	2.4m (7' 11")
Hopper capacity:	9.1m ³ (12 cu. yd.)
Hopper body:	15mm thick wear resistant steel plate, heavy duty reinforcing ribs
Control:	Variable speed control via proportional flow control valve



Vibrating Grizzly Feeder

Type:	Spring mounted vibrating pan & grizzly feeder
Vibrating Unit:	Twin heavy-duty cast eccentric shafts running in spherical roller bearings, gear coupled at drive end
Drive:	Flange mounted hydraulic motor
Feeder length:	4.26m (14')
Feeder width:	1.06m (3' 6")
Grizzly:	1.65 metres long stepped cartridge type grizzly with nominal 60mm aperture self cleaning
Control:	Variable speed control via proportional flow control valve



Plant Chute-work

Crusher feed chute:	One piece fabrication with 12mm thick mild steel plate sides with 20mm thick bottom plate
Grizzly fines/bypass chute:	2-way dirt chute provided to discharge to product conveyor or optional dirt conveyor. Fabricated from 6mm mild steel, complete with hand operated flap door to direct grizzly fines to either dirt conveyor or product conveyor



All specifications subject to change without prior notice



Powerscreen® 1180 Premiertrak

SPECIFICATION - Rev 6. 01/01/2015

Product Conveyor

Conveyor type:	Troughed belt conveyor
Belt type:	EP630/4 with 6mm top & 2mm bottom heavy-duty rubber covers, vulcanised
Drive:	Direct drive hydraulic motor
Belt width:	1000mm (39")
Discharge height:	3.9m (12' 10")
Stockpile volume:	88m ³ (115 cu. yd.)
Maximum clearance:	350mm (13.5") jaw to belt 430mm (17") engine to belt
Tunnel:	Conveyor fitted with tunnel & side covers to minimise rebar snagging
Feedboot:	Mild steel plate with abrasion resistant steel liners at feed point
Impact bars:	Fitted immediately below crusher outlet under conveyor feed point
Belt adjustment:	Belt tensioned by screw adjusters at head drum
Belt covers:	Canvas type removable dust covers fitted to head section beyond chassis area
Belt scraper:	Polyurethane blades as standard
Lubrication:	Remote head drum grease points located under shedder plate
Skirting:	Wear resistant rubber skirts along entire conveyor length



Dust Suppression System

Sprays bars with atomiser nozzles mounted over crusher mouth, product conveyor feed & discharge points. Piped to an inlet manifold for client's pressured water supply

Type:	Clean water multi atomising nozzles
Inlet:	Single filtered inlet point on chassis
Pressure:	2.8 bar (42 psi)
Frost protection:	Via system drain valves
Pump:	Optional extra



All specifications subject to change without prior notice

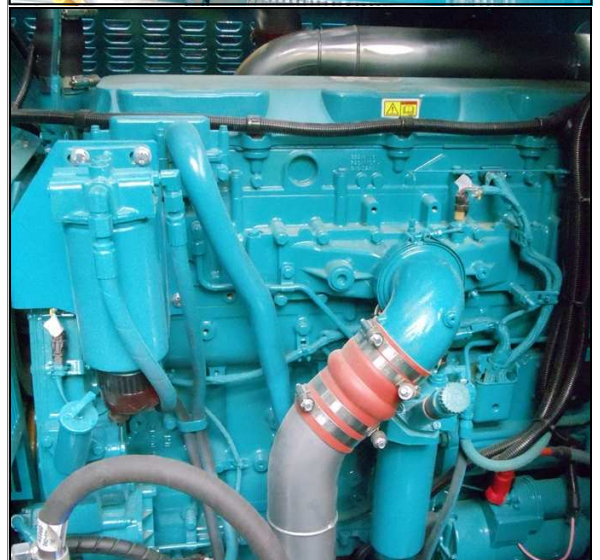
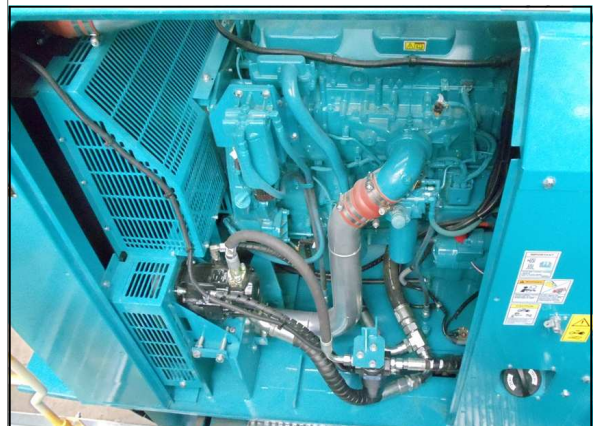
Powerscreen® 1180 Premiertrak

SPECIFICATION - Rev 6. 01/01/2015

Powerunit

- EU Stage IIIA / US Tier 3:** Caterpillar C13 ACERT, 6 cylinder, 288 kW (385hp) at 2100rpm *
- Operating conditions:** Ambient temperature +40°C & -12°C (104°F & 10°F) at altitudes up to 1000m (3281ft) above sea level #
- Operating rpm range:** 1800rpm
- Typical fuel consumption:** N/A
- Plant drive:** High quality belt driven pumps driven direct from engine
- Fuel tank capacity:** 476 L (125 US Gal)
- Hydraulic tank capacity:** 360 L (95 US Gal)
- Clutch type:** High efficiency, self-adjusting HFO clutch with Electro-hydraulic operation
- Crusher drive:** Direct drive via wedge belts
Clutch pulley PCD 212 mm (8.35")
Crusher pulley PCD 1458mm (57.4")
- Crusher drive :** Manual adjustable screw tensioners located under powerunit
- Service Access:** Robust steel canopy with gull wing access doors & service panels

For applications outside this range please consult Powerscreen as plant performance / reliability may be affected



All specifications subject to change without prior notice



Powerscreen® 1180 Premiertrak

SPECIFICATION - Rev 6. 01/01/2015

Crawler Tracks

Type:	Heavy-duty tracks
Pitch:	190mm (7.5")
Longitudinal centers:	4.22m (13' 10")
Track width:	500mm (20")
Climbing grade:	25° maximum
Speed:	0.70kph (0.43mph)
Drive:	Hydraulic motors
Tensioning:	Hydraulic adjuster, grease tensioner



Guarding

Wire mesh or sheet metal guards are provided for all drives, flywheels, pulleys & couplings

The guards provided are designed & manufactured to meet CE & ANSI standards

Hinged access guards are provided on the top, side & both ends of the engine



Platforms

Platforms fitted with double row handrails & access ladders are provided for maintenance

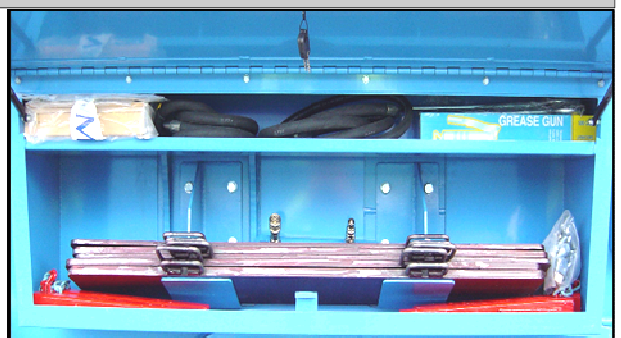
- Crusher feed chute
- Front & non drive side of crusher
- Front & rear of powerunit
- Hydraulic tank

Walkways & handrails are galvanised as standard



Toolbox

A plant mounted lockable toolbox is provided containing spare crusher shims, operators manual, hopper wedges, jawstock support wedge & a grease gun



All specifications subject to change without prior notice



Powerscreen® 1180 Premiertrak

SPECIFICATION - Rev 6. 01/01/2015

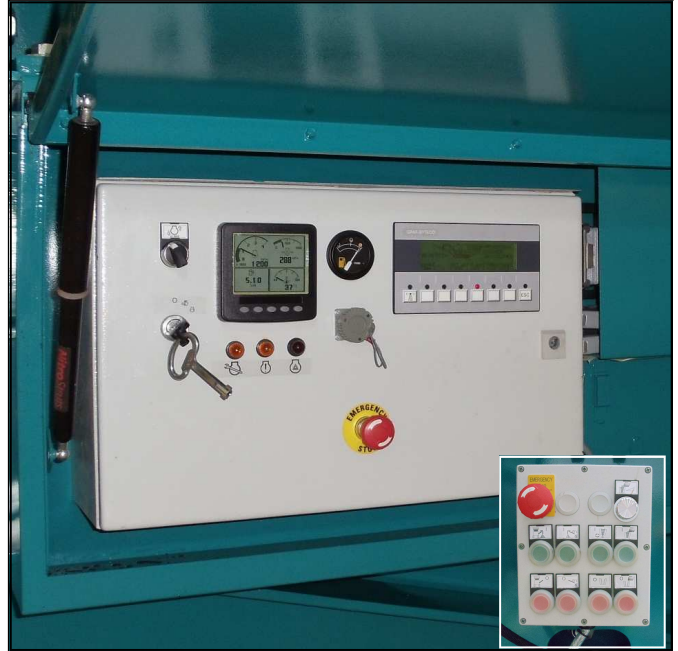
Plant Controls

Full PLC control panel

Full system diagnostics

Controls fitted to the plant include:

- Feeder (start/stop/speed)
- Crusher (start/stop)
- Product conveyor (start/stop)
- Engine (start/stop/speed)
- Optional dirt conveyor (start/stop)



Umbilical Control

An umbilical control unit is also supplied as standard with the plant

Controls tracking function, feeder stop/start & a stop button for the plant



Chassis

Heavy duty I-section welded construction, provides maximum strength & accessibility



Optional Extras

- Grizzly cartridge 90mm nominal spacing
 - Deflector plate under crusher
 - 600mm (24") dirt conveyor (hydraulic folding)
 - 800mm (32") dirt conveyor (rigid)
 - Magnet prepared
 - Single pole overband magnetic separator
 - Twin pole overband magnetic separator
 - Belt weigher
 - Electric refuelling pump
 - Hydraulic water pump
 - Radio remote control
- (For pricing please refer to your local dealer)

All specifications subject to change without prior notice



Powerscreen® 1180 Premiertrak

SPECIFICATION - Rev 6. 01/01/2015

600mm (24") Dirt Conveyor

Conveyor type:	Troughed belt conveyor, folds hydraulically for transport
Width:	600mm (24")
Discharge height:	2.28m (7' 6")
Stockpile volume:	18m ³ (23 cu. yd.)
Drive:	Direct drive hydraulic motor
Position:	Discharges RHS or LHS
Weight:	1000kg (2204lbs)



800mm (32") Dirt Conveyor

Conveyor type:	Troughed belt conveyor, removable for transport
Width:	800mm (32")
Discharge height:	3.07m (10' 1")
Stockpile volume:	43m ³ (56 cu. yd.)
Drive:	Direct drive hydraulic motor
Position:	Discharges RHS or LHS



Magnet

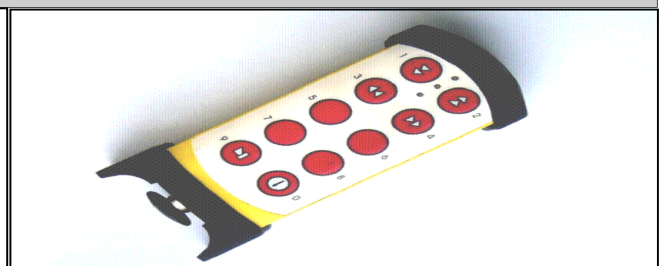
Options:	Magnet prepared Terex TX440 single pole (S.P.) Terex TX440X twin pole (T.P.)
Belt width:	750mm (30")
Centres:	1700mm (67")
Drive / Control:	Direct drive hydraulic motor, pre-set variable speed
Discharge:	LHS via stainless shedder plate
Weight:	S.P. 1000kg (2204lbs) T.P. 1500kg (3306lbs)



Radio Remote Control

Complete with integrated tracking functions & plant stop button. NB - Only available in certain countries where type approval has been obtained

- Remote can also be used to:
- Feeder (start/stop)



All specifications subject to change without prior notice



Hot/Cold Climate Oils

Cold climate oils - (Recommended for ambient temperatures between -20 to +30oC)

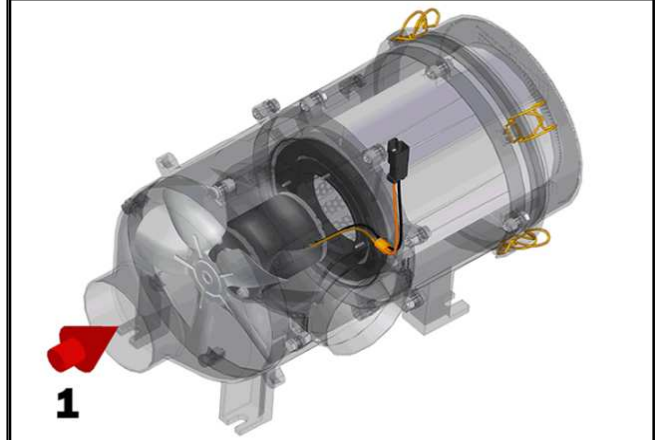
Hot climate oils - (Recommended for ambient temperatures between +15 to +50oC)



Control Panel Positive Pressurisation

An additional unit designed to reduce dust particles within the Control Panel.

A continuous flow of clean air is passed through the cabinet whilst the unit simultaneously filters out any particulate laden air.



Powerscreen® 1180 Premiertrak

SPECIFICATION - Rev 6. 01/01/2015

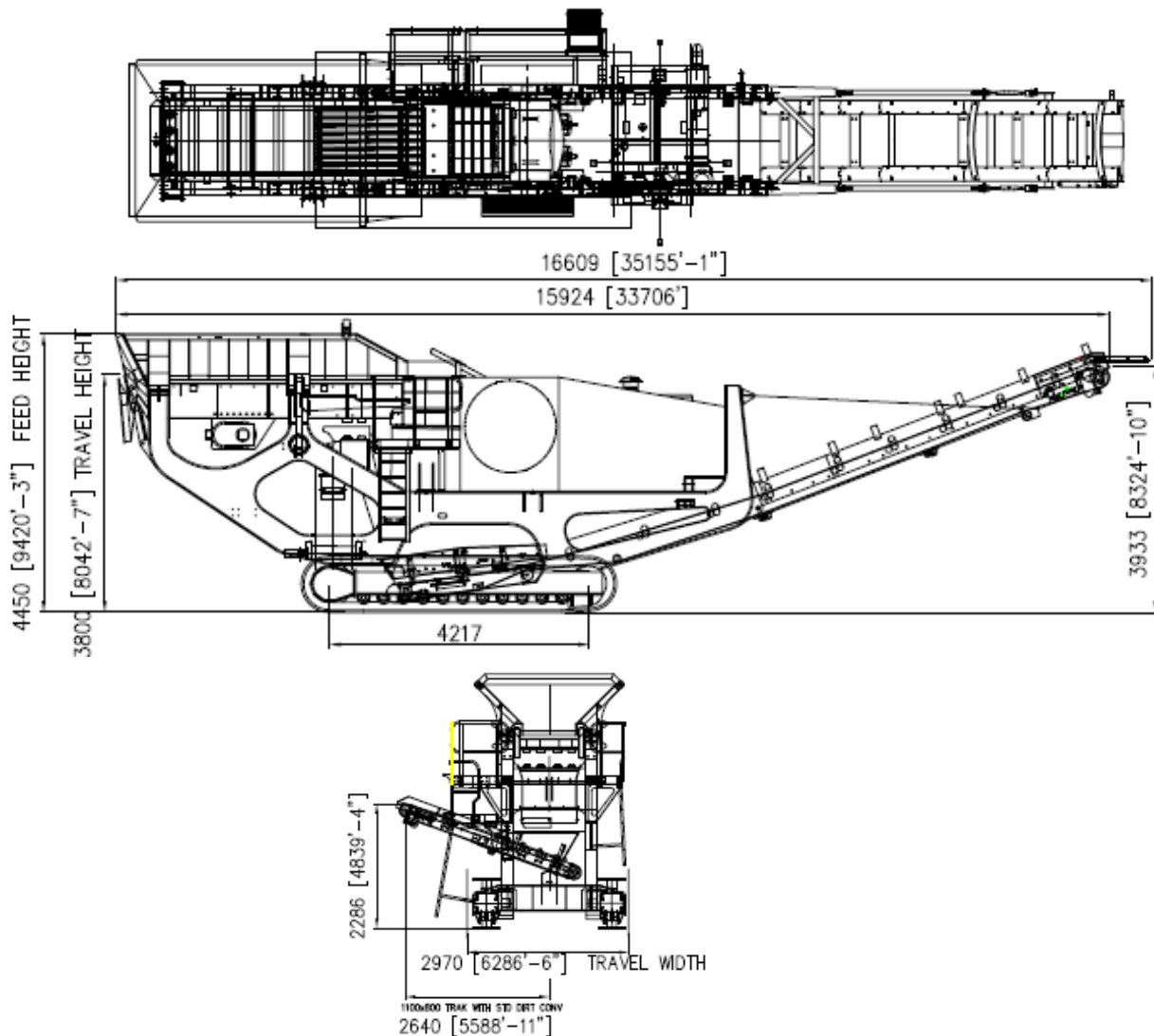
Approximate Plant Weight & Dimensions

Working length: 16.6m (54' 6")
 Working height: 4.45m (14' 7")
 Working width: 2.97m (9' 9") no dirt conveyor
 4.2m (13' 8") with 600mm (24") dirt conveyor

Transport length: 16.6m (54' 6")
 Transport width: 2.97m (9' 9")
 Transport height: 3.8m (12' 6")

Total plant weight: 59,680kg (131,571lbs) including dirt conveyor

1180 Premiertrak Working Dimensions



All specifications subject to change without prior notice



Powerscreen® 1180 Premiertrak

SPECIFICATION - Rev 6. 01/01/2015

Powerscreen equipment complies with CE requirements.

Please consult Powerscreen if you have any other specific requirements in respect of guarding, noise or vibration levels, dust emissions, or any other factors relevant to health and safety measures or environmental protection needs. On receipt of specific requests, we will endeavour to ascertain the need for additional equipment and, if appropriate, quote extra to contract prices.

All reasonable steps have been taken to ensure the accuracy of this publication, however due to a policy of continual product development we reserve the right to change specifications without notice.

It is the importers' responsibility to check that all equipment supplied complies with local legislation regulatory requirements.

Plant performance figures given in this brochure are for illustration purposes only and will vary depending upon various factors, including feed material gradings and characteristics. Information relating to capacity or performance contained within this publication is not intended to be, nor will be, legally binding.

Terex GB Ltd.
200 Coalisland Road
Dungannon
Co. Tyrone
Northern Ireland
BT71 4DR

Tel: +44(0) 28 8774 0701
Fax: +44(0) 28 8774 6569

E-Mail: sales@powerscreen.com
Web: www.powerscreen.com

Terex is a registered trademark of Terex Corporation in the United States of America and many other countries.
Powerscreen is a registered trademark of Terex GB Ltd in the United States of America and many other countries.

Copyright Terex Corporation 2015

All specifications subject to change without prior notice

